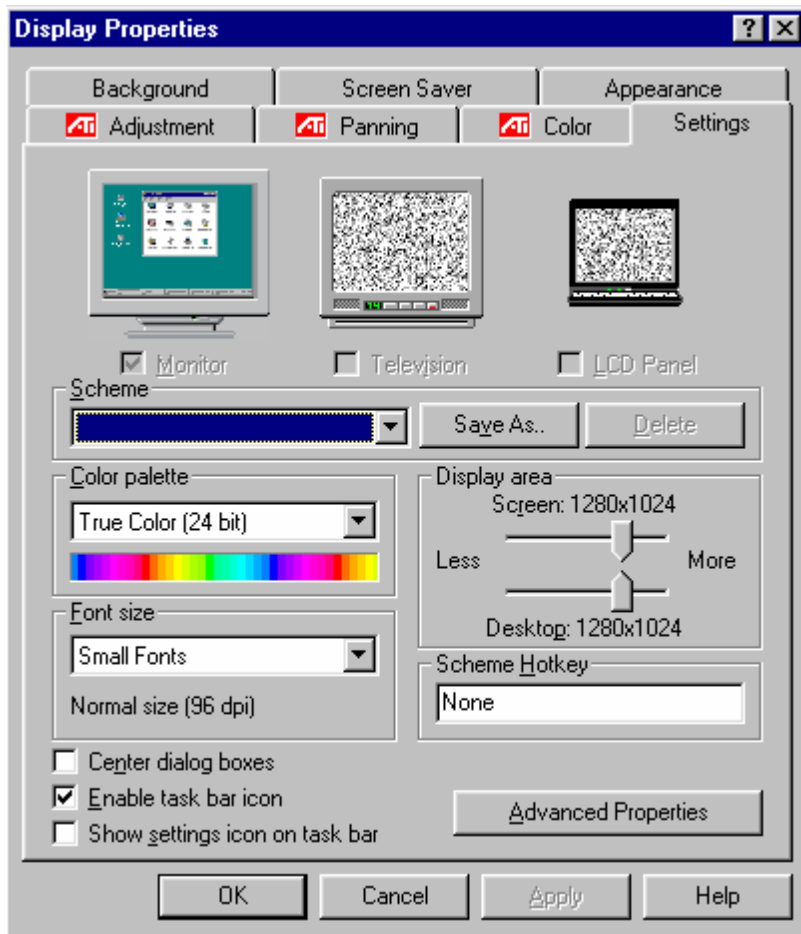




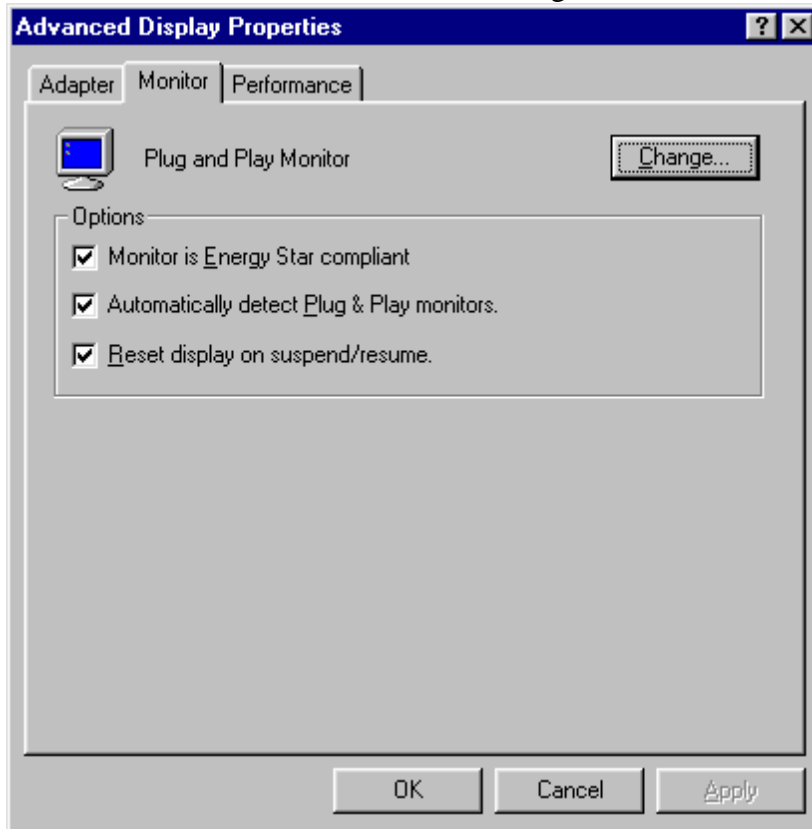
Windows 95

Monitor Driver

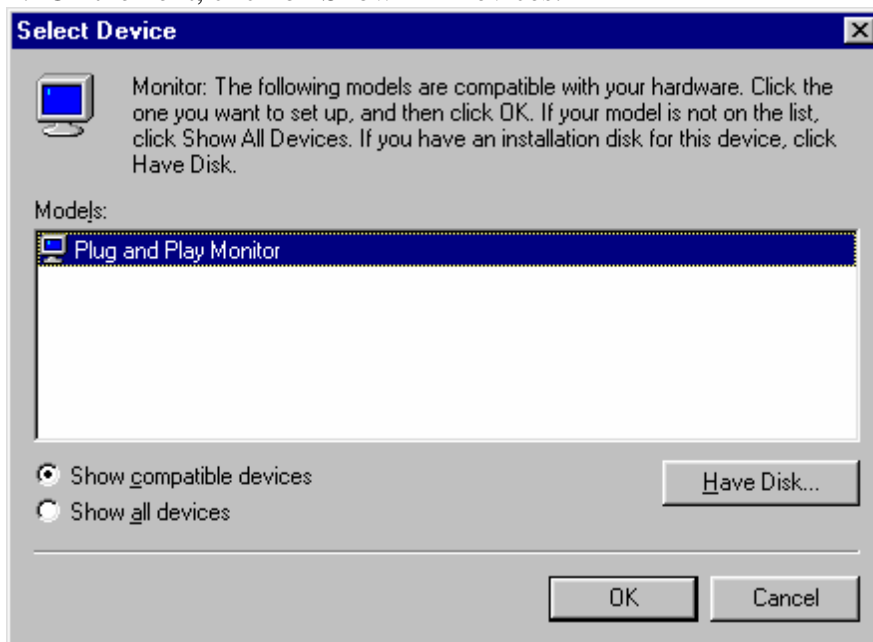
1. Download filename: VSINF.EXE, double-click on the filename and it will self extract:
 - a) The INF files (defaults to c:\windows\inf)
 - b) The ICM files (defaults to c:\windows\system\color)
 - c) Installation should then be complete:
 - d) Restart the computer.
2. Click on “Start” -> “Settings” -> “Control Panel” -> “Display” -> “Settings tab”-> “Advanced Properties”



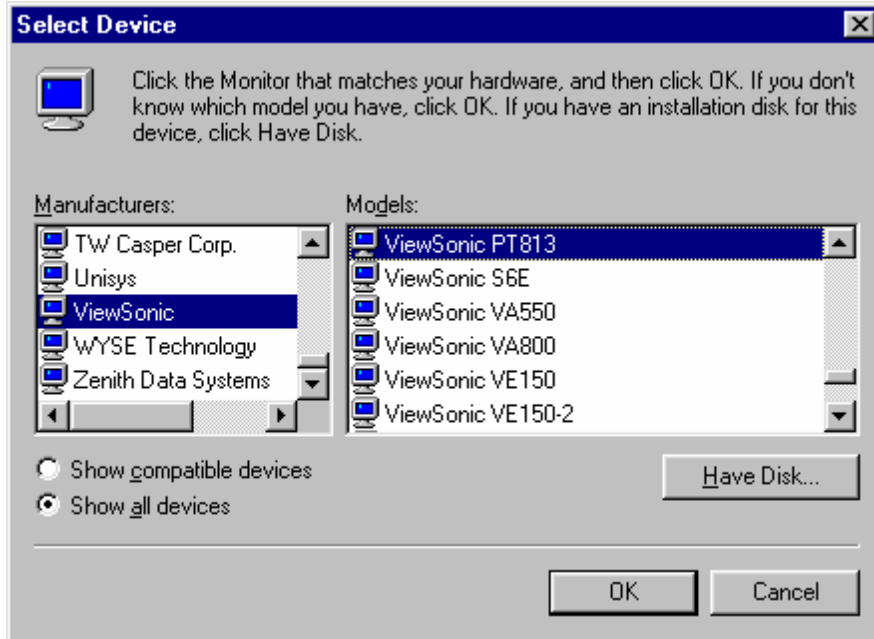
3. Click on “Monitor,” and click on “Change”



4. On the next, click on Show All Devices.



5. The next screen will show two columns, Manufacturers and Models. Click on “ViewSonic Corporation” on the left and select your monitor on the right.
*If the model is not list, check “ViewSonic” under the Manufacturers.



6. Click on “OK” and then on the next screen click on “Apply” and “Close”

