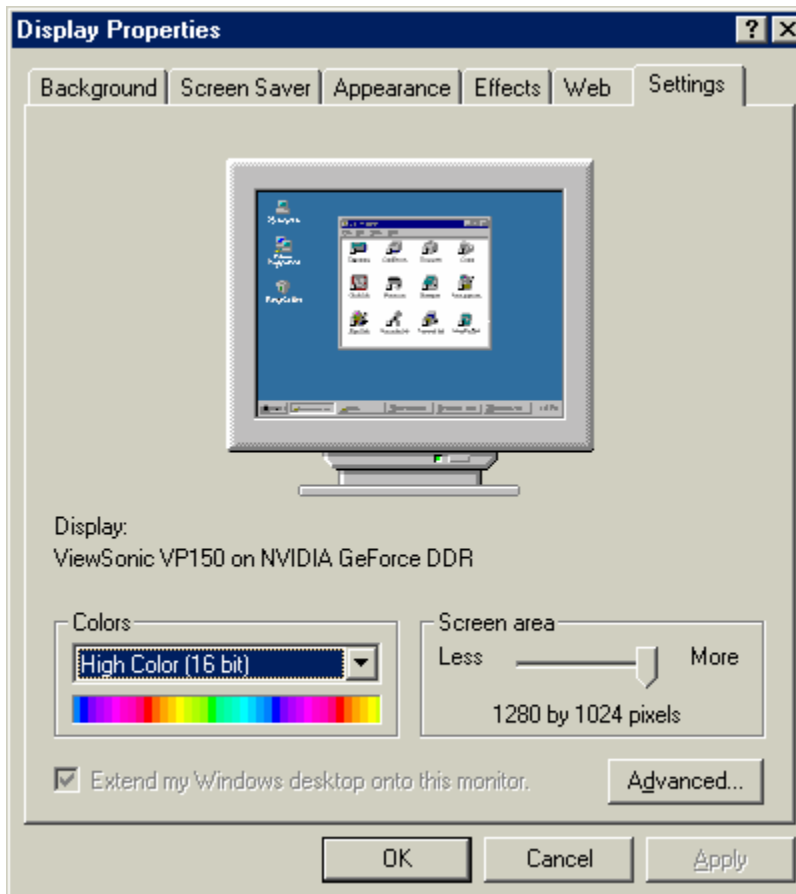


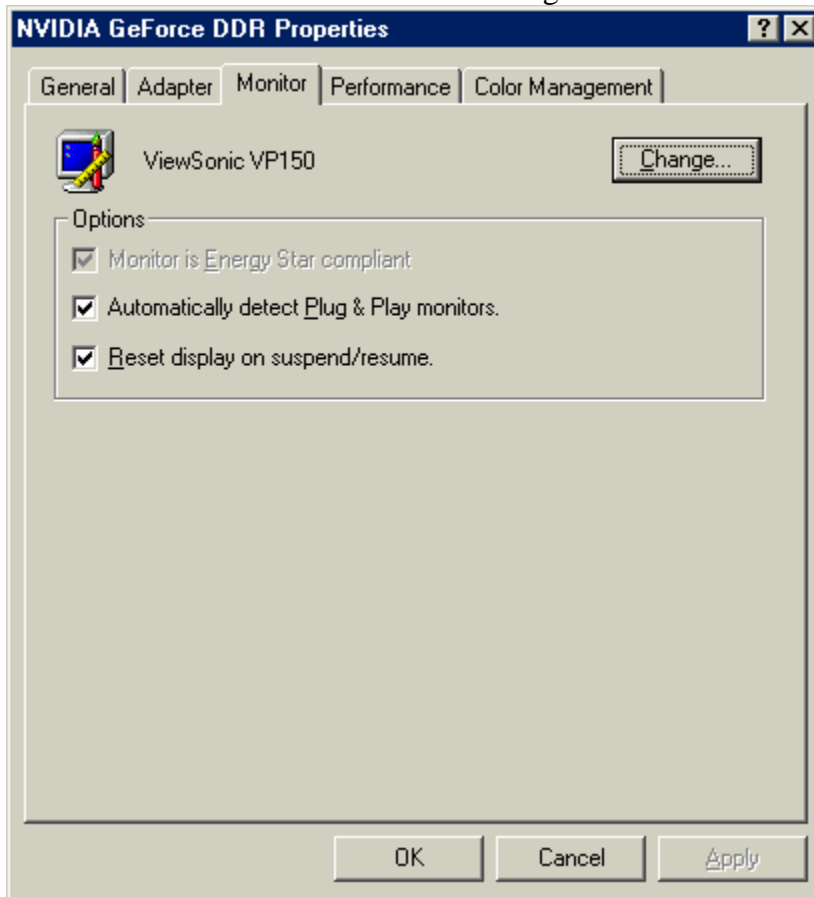


Monitor Driver

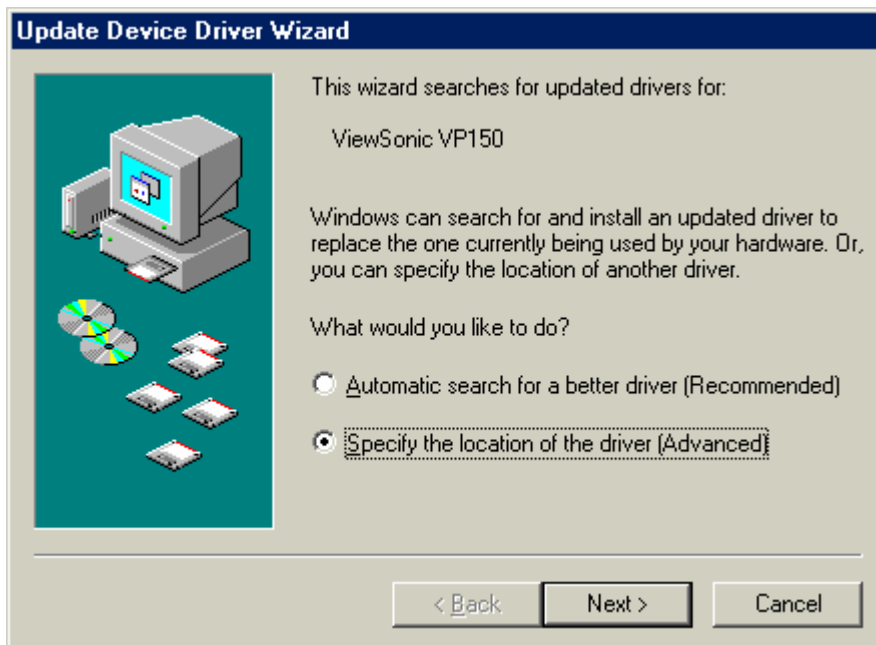
1. Download filename: VSINF.EXE, double-click on the filename and it will self extract:
 - a) The INF files (defaults to c:\windows\inf)
 - b) The ICM files (defaults to c:\windows\system\color)
 - c) Installation should then be complete
 - d) Restart the computer
2. Click on "Start" -> "Settings" -> "Control Panel" -> "Display" -> "Settings tab" -> "Advanced"



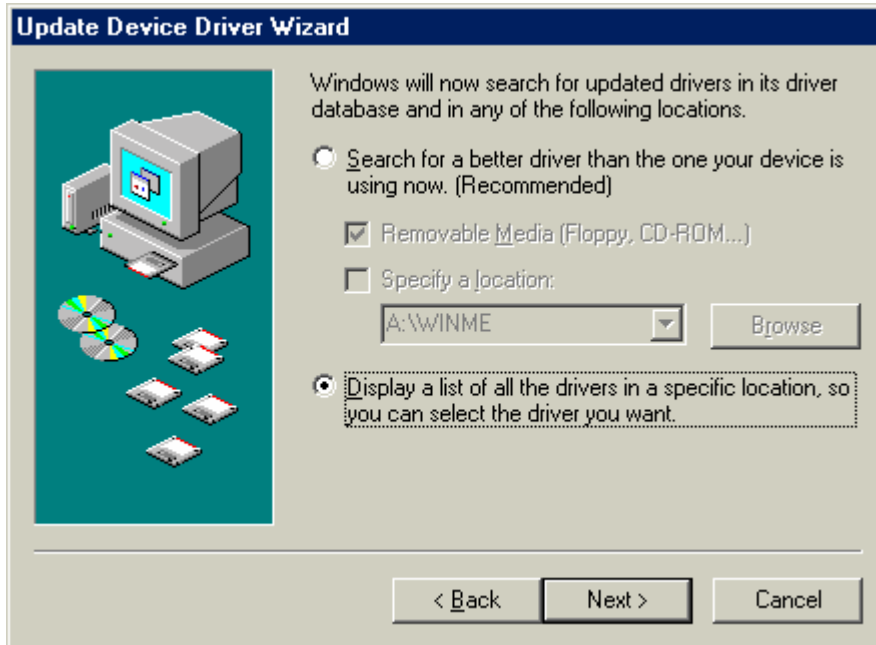
3. Click on “Monitor” and click on “Change”



4. An Update Device Driver Wizard will appear select “Specify the location...” and then click “Next”.



5. Then, you will want to select “Display a list of all drivers...” and click on “Next”

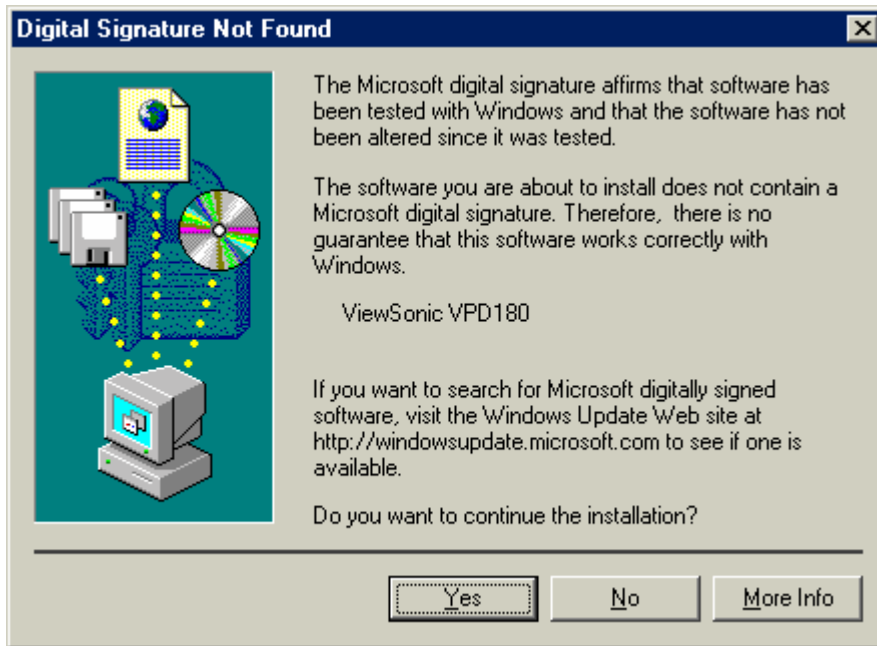


6. Click on “Show all Hardware”, you will see two lists: one for Manufacturer and another for Models. Highlight “ViewSonic Corporation” and select the appropriate model on the right.

* If the model is not listed, check “ViewSonic” under the Manufacturer.

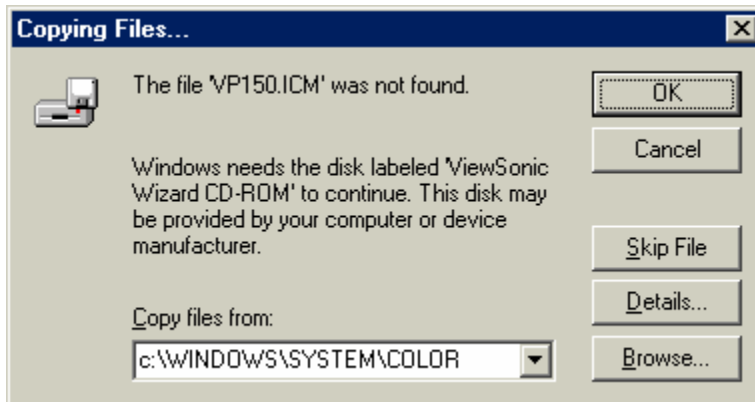


7. The following screen appears. Just click on “Yes”, to continue with the installation. The INF file is Microsoft certified. However, Microsoft did not digitally sign for all of the monitor models. The digitally signed models will be updated as time goes on.

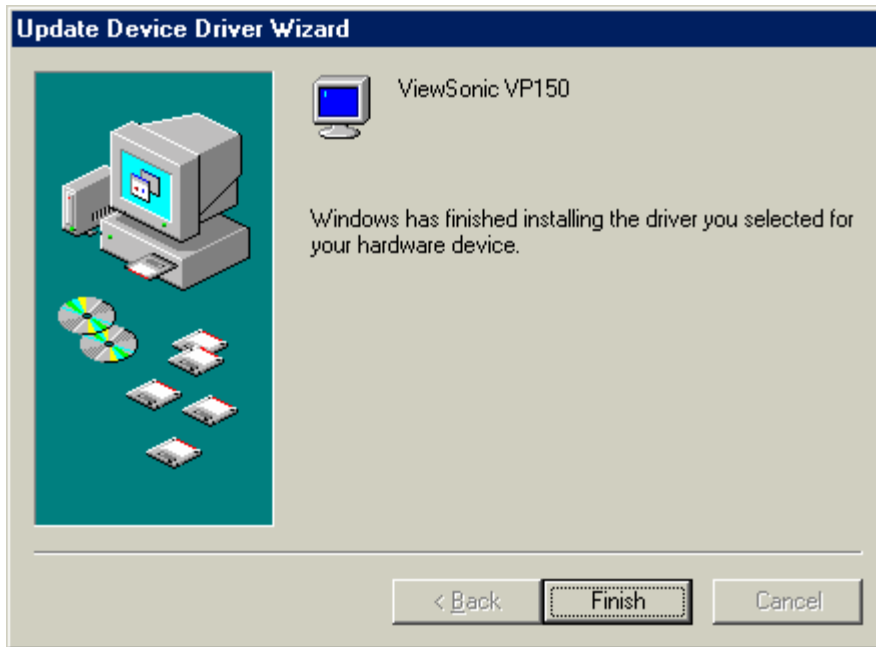


8. Type in the following directory: “c:\windows\system\color” in the Browse box, then click on “OK”.

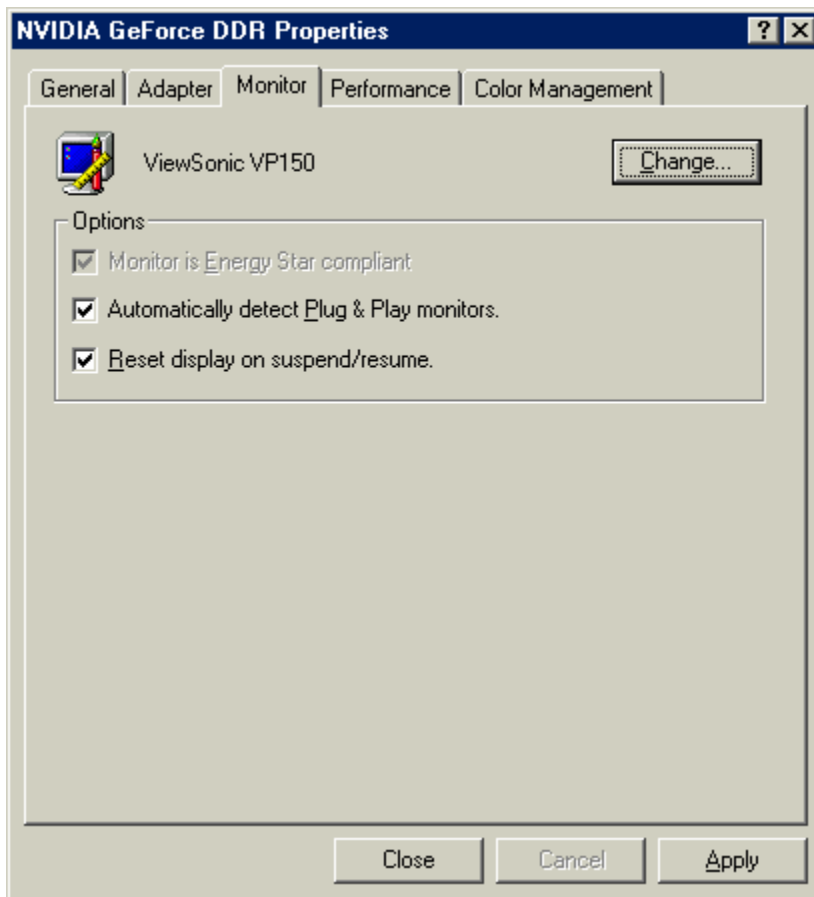
*The directory may be different if Windows was installed at an alternative location.



9. Click on “Finish”.



10. Click on “Apply”



11. Click on “OK”.

