



Monitor Driver

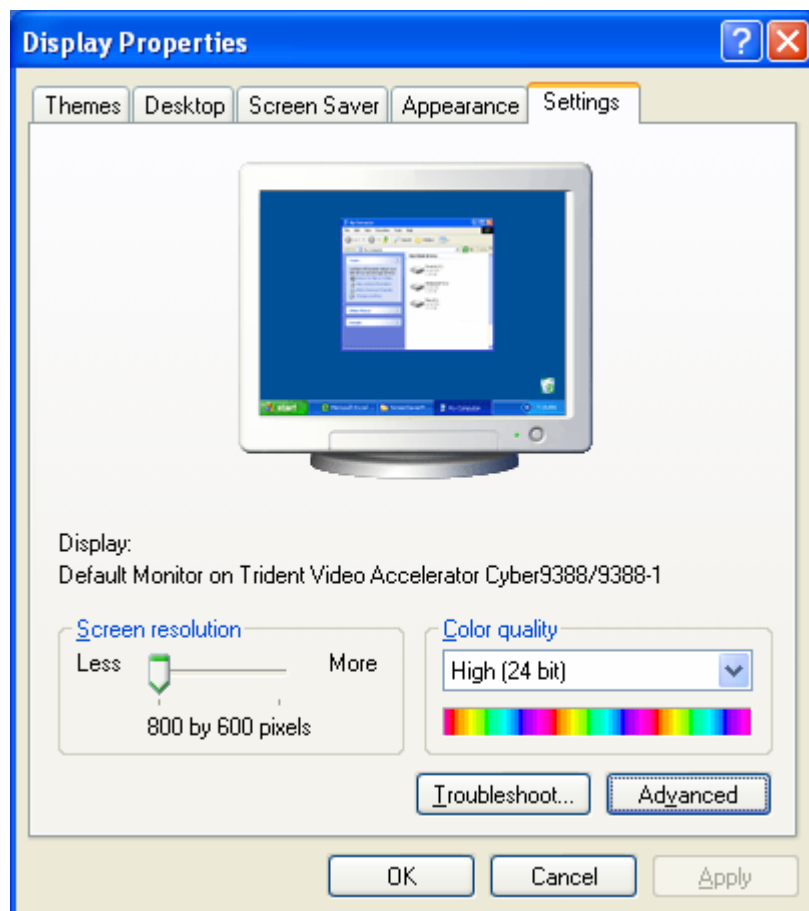
Download "vsinf.exe" off ViewSonic web site at

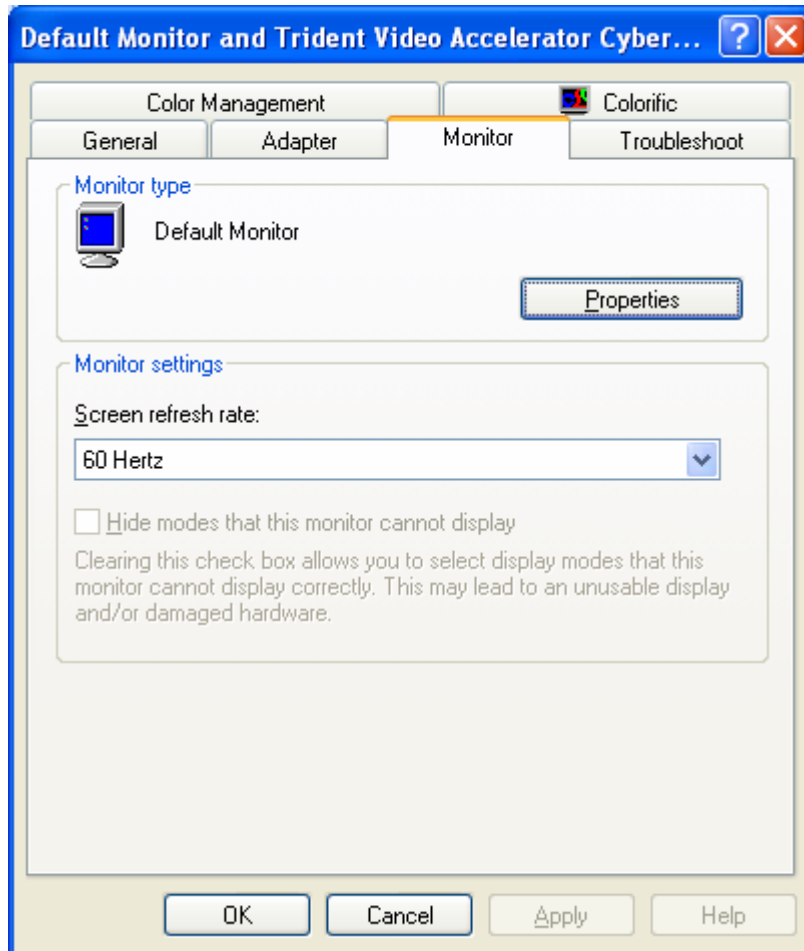
<http://www.viewsonic.com/support/drivers.htm>.

Install vsinf.exe.

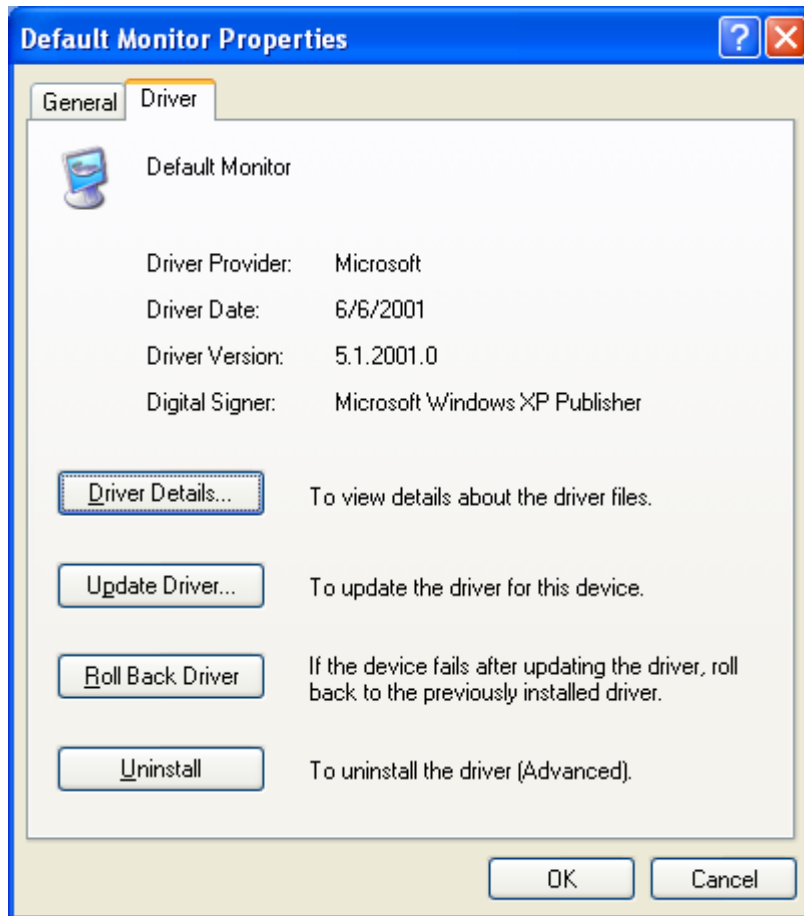
Right click anywhere on a blank desktop and select "Properties".

Select "Settings" tab and click on "Advanced" tab





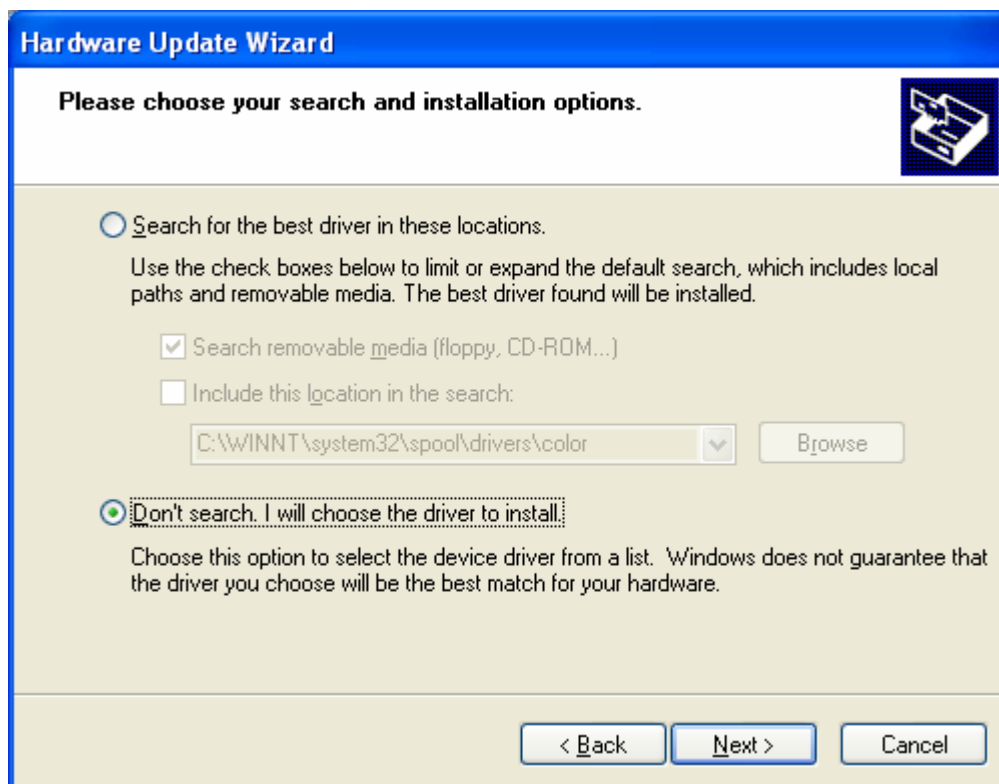
Select "Monitors" tab and click on "Properties" tab.



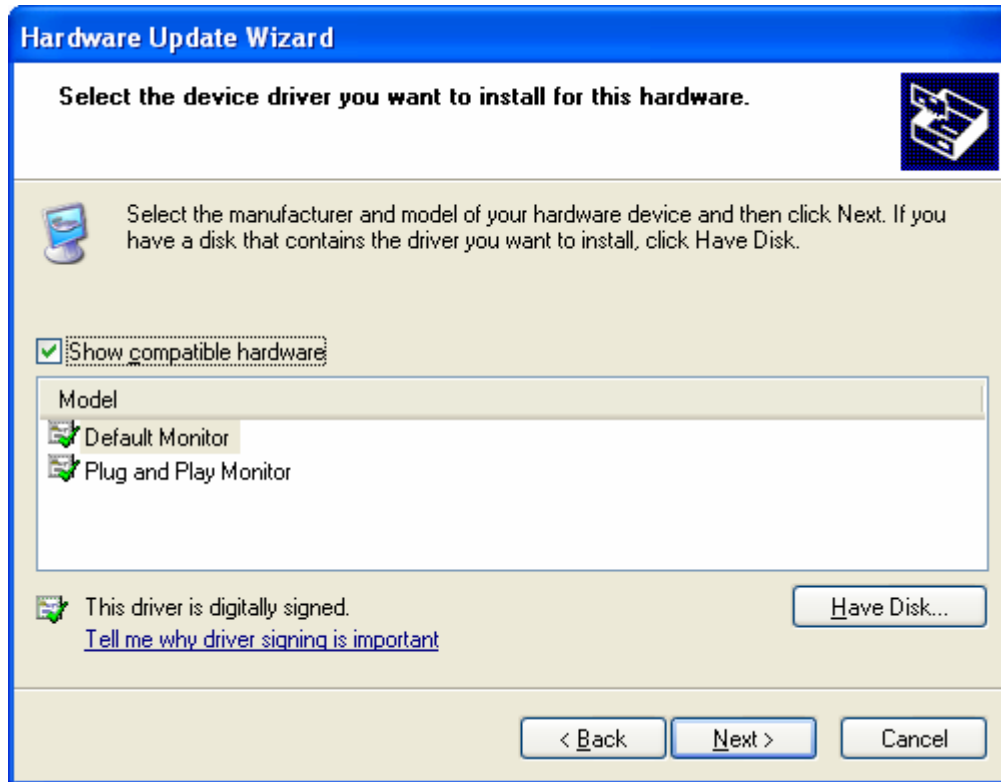
Select "Driver" tab and click on "Update Driver...".



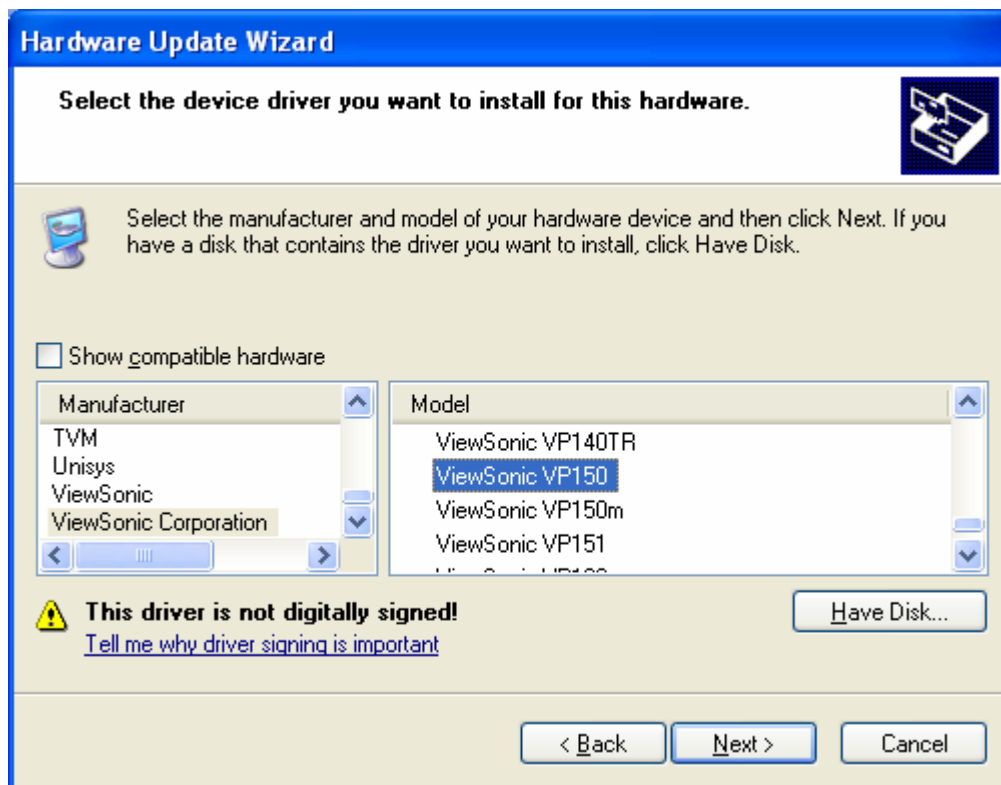
Select "Install from a list or specific location (Advanced)" and "Next".



Select "Don't search. I will choose the driver to install." and "Next".



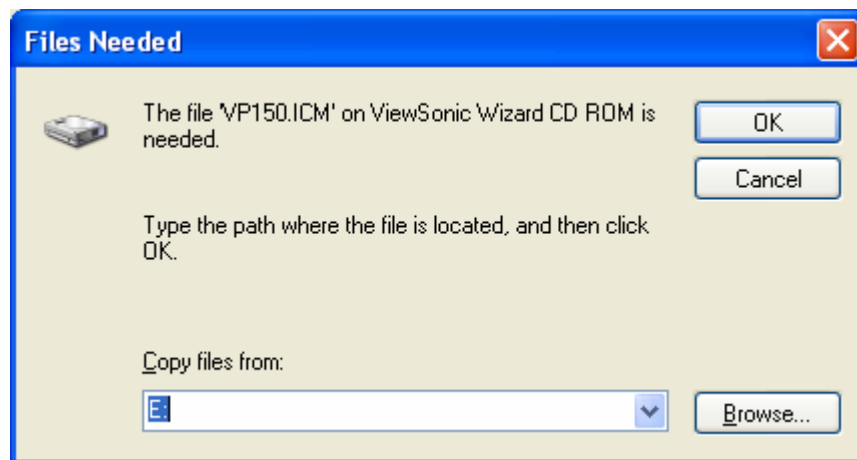
Uncheck the box that says “Show Compatible Hardware”



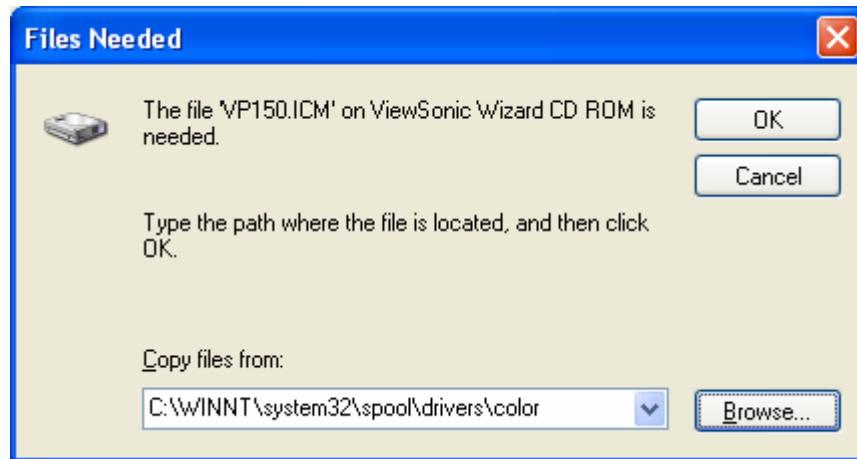
Select ViewSonic under the manufacturer list and then select the model.



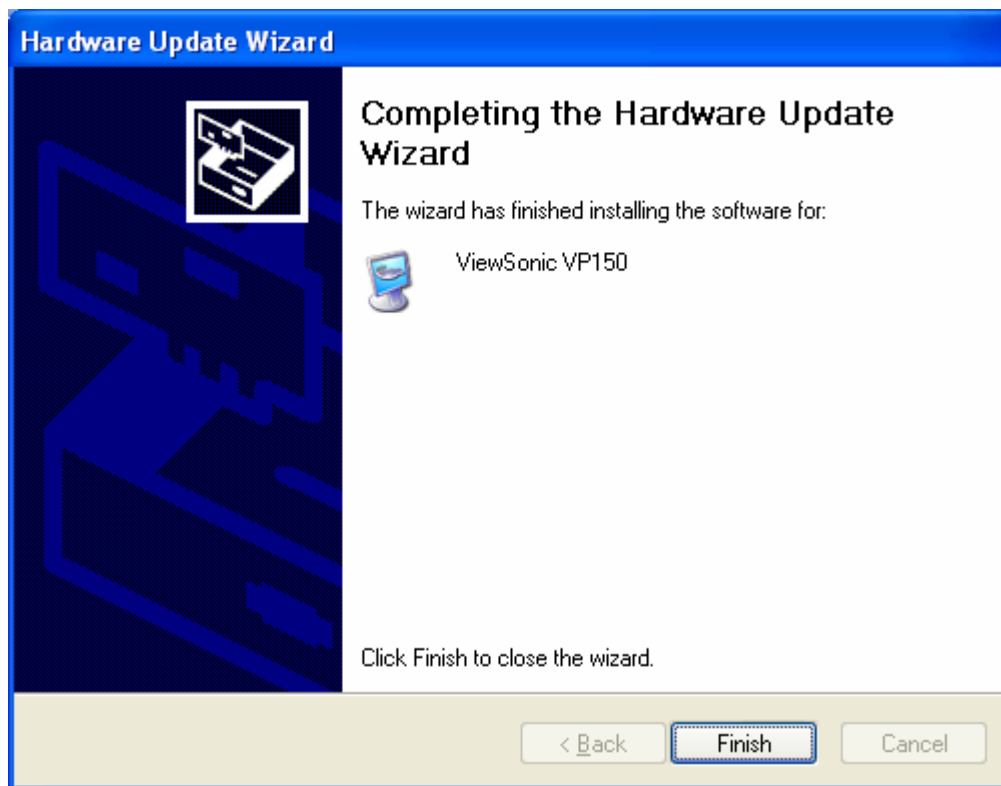
Click on "Continue Anyway"
(This screen may not appear for customer this disable the digital signing.)



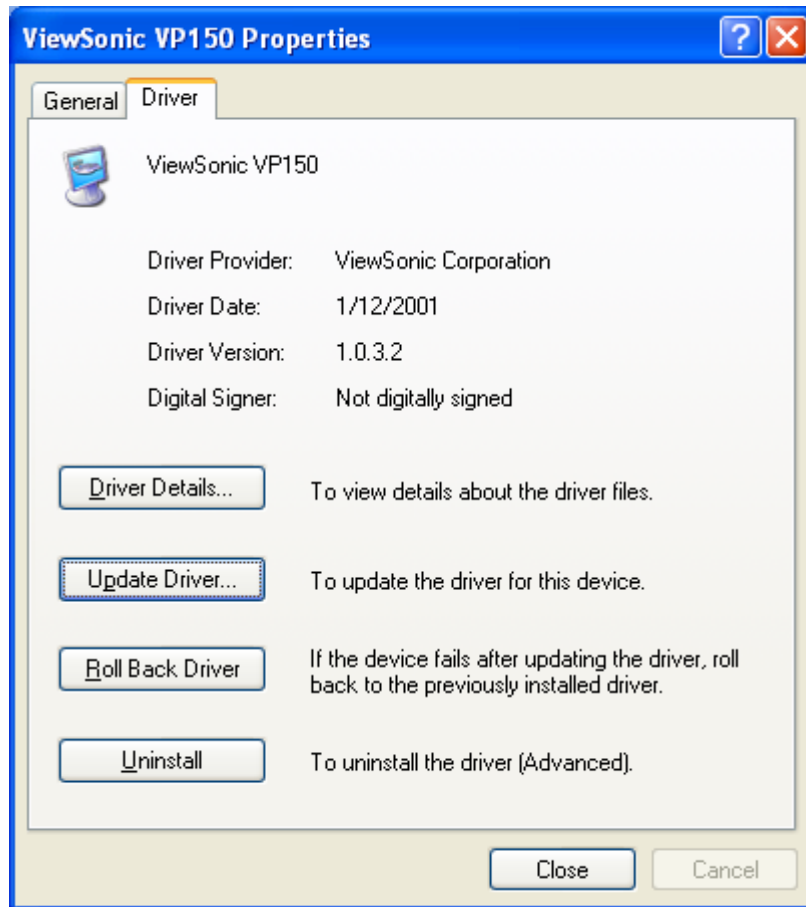
Click on "Browse" and navigate to c:\windows\system32\spool\drivers\color.



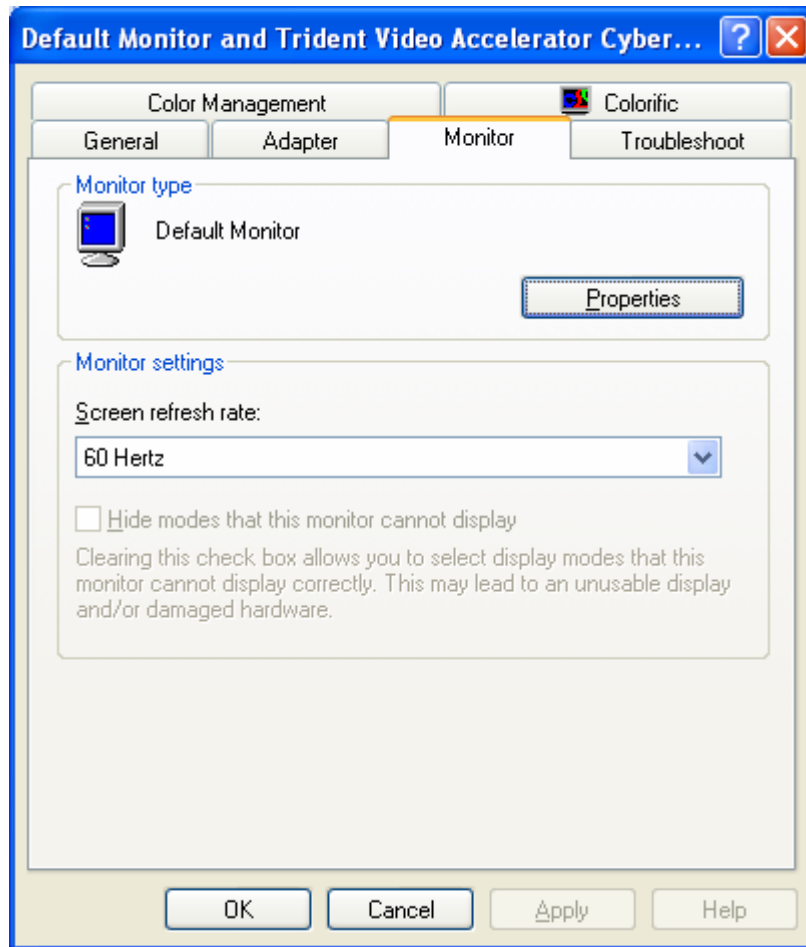
This may vary depending on where the operating system was installed to.



Click "Finish".



Click "Close"



Click "Ok"